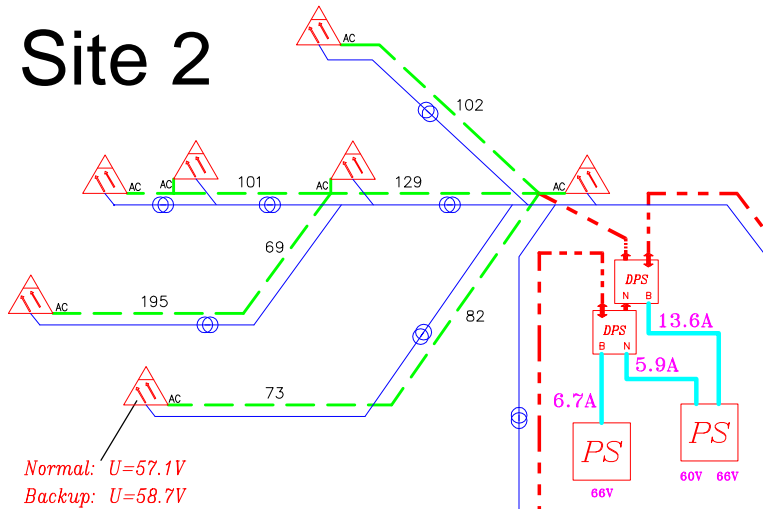


# FTTC Network Upgrade

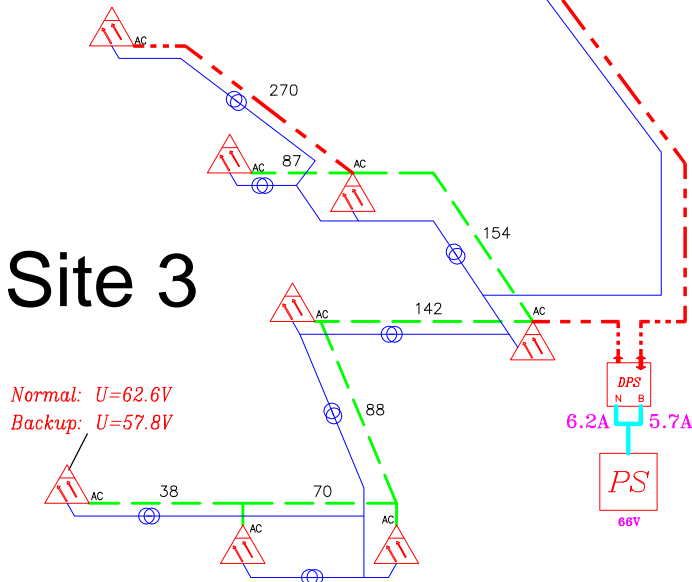
## DPS4 power backup

Site 2



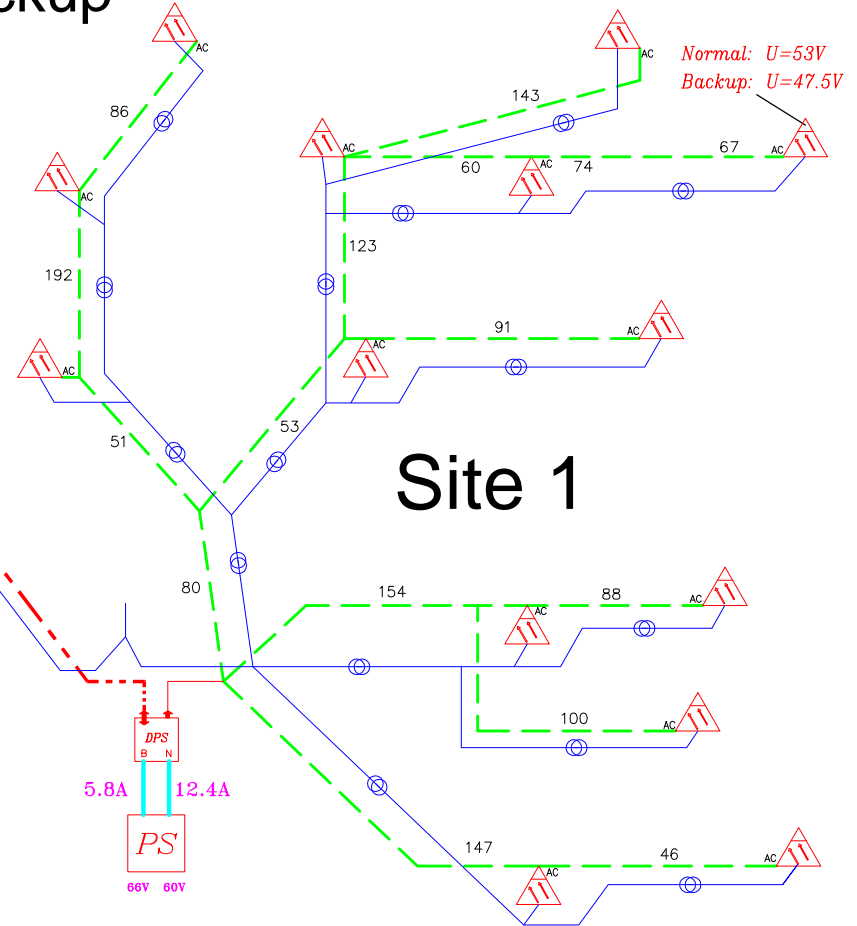
Normal:  $U=57.1V$   
Backup:  $U=58.7V$

Site 3





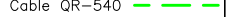
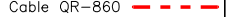


Normal:  $U=62.6V$   
Backup:  $U=57.8V$

Site 1



Normal:  $U=53V$   
Backup:  $U=47.5V$

### Map Legend

- Fiber opt.cable 
- Mini Optical Node 
- Cable QR-540 
- Cable QR-860 
- DPS4 unit 
- Power Supply unit 

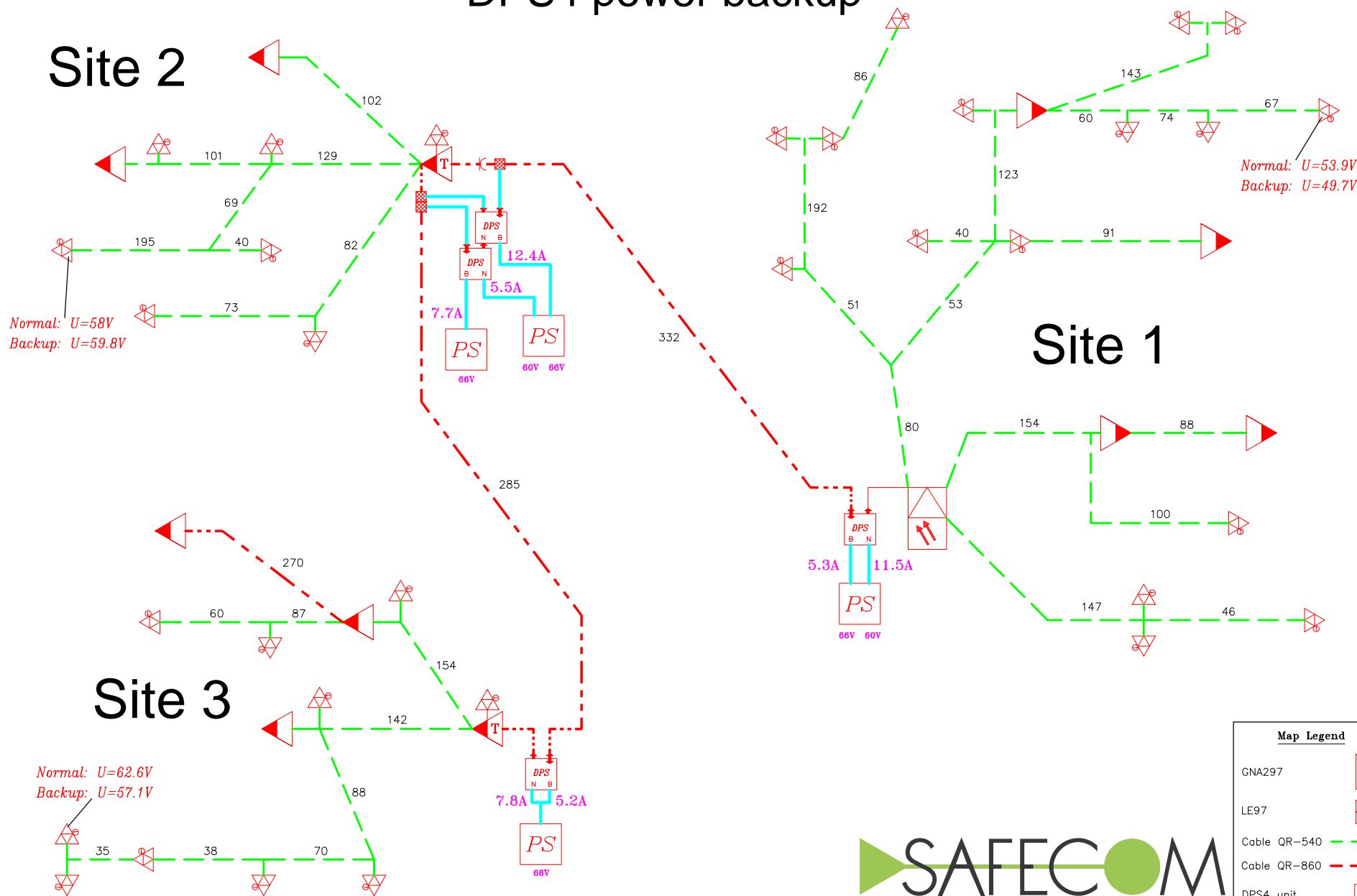
**SAFECOM**

WWW.SAFECOM.TV

# HFC network

## DPS4 power backup

Site 2



Normal:  $U=58V$   
Backup:  $U=59.8V$

Normal:  $U=53.9V$   
Backup:  $U=49.7V$

Site 1

Site 3

Normal:  $U=62.6V$   
Backup:  $U=57.1V$

Map Legend	
GNA297	
LE97	
Cable QR-540	
Cable QR-860	
DPS4 unit	
Power Supply unit	